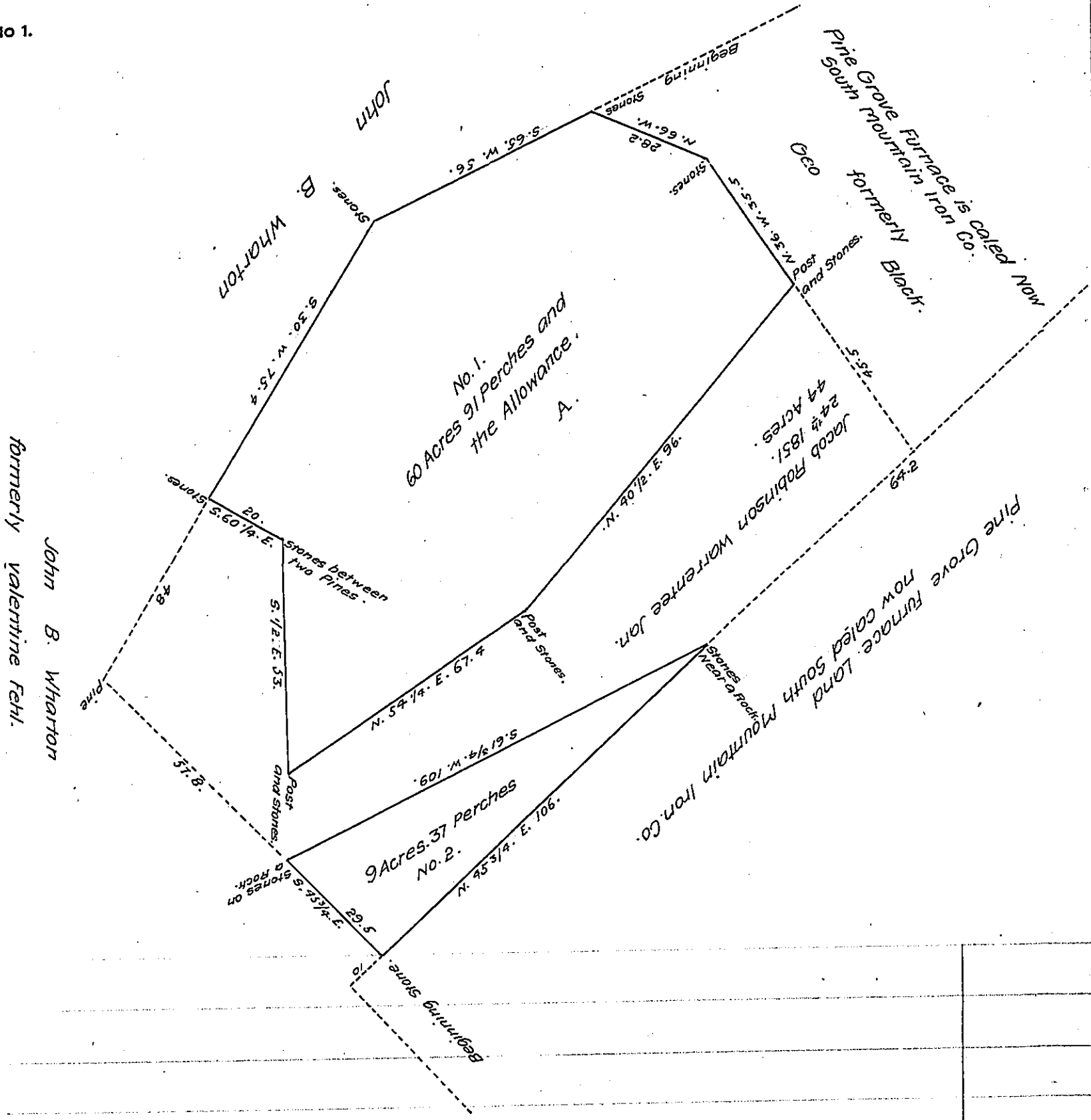


FORM NO 1.



Draft of Two Tracts of Land Containing 69 Acres 128 Perches and Allowance of 6 per Cent for Roads Situate in Menallen Township in the County of Adams Surveyed the 13th Day of May A.D. 1874 for V. W. Weaver in Pursuance of Warrant Granted to V. W. Weaver Dated the 22th Day of January A.D. 1874 for 30 Acres, unimproved is in Timber Lying ⁱⁿ the South Mountain.

Jesse L. Keller.

County Surveyor.

To Robert B. Beath Surveyor General.

0 —

IN TESTIMONY that the above is a copy of the original remaining on file in the Department of Internal Affairs of Pennsylvania, made conformably to an Act of Assembly approved the 16th day of February, 1833, I have hereunto set my Hand and caused the Seal of said Department to be affixed at Harrisburg, this sixteenth day of July 1907.

Henry Horch
Secretary of Internal Affairs.